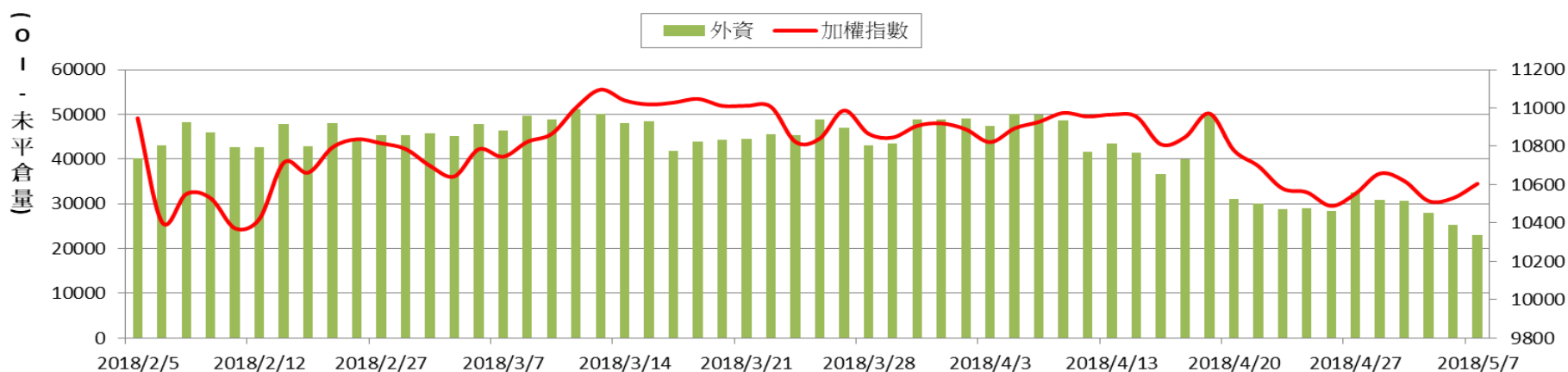
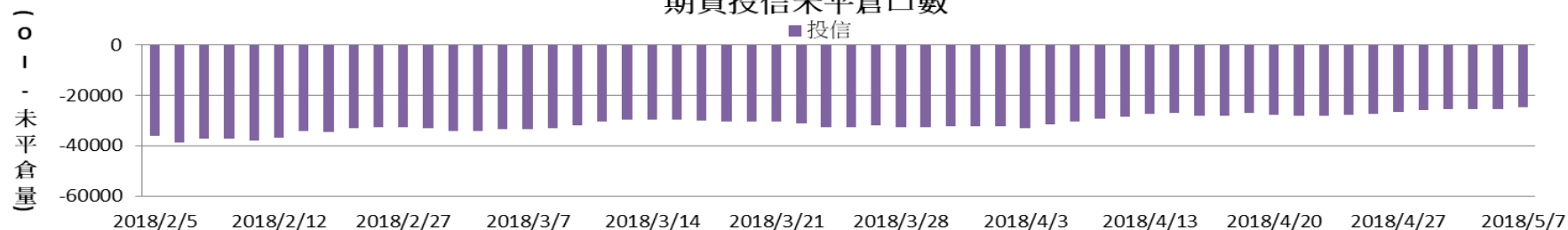


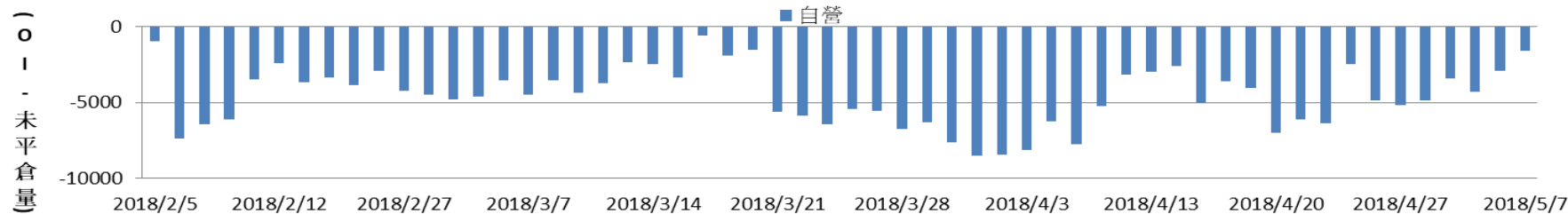
期貨外資未平倉口數 v.s 加權指數



期貨投信未平倉口數

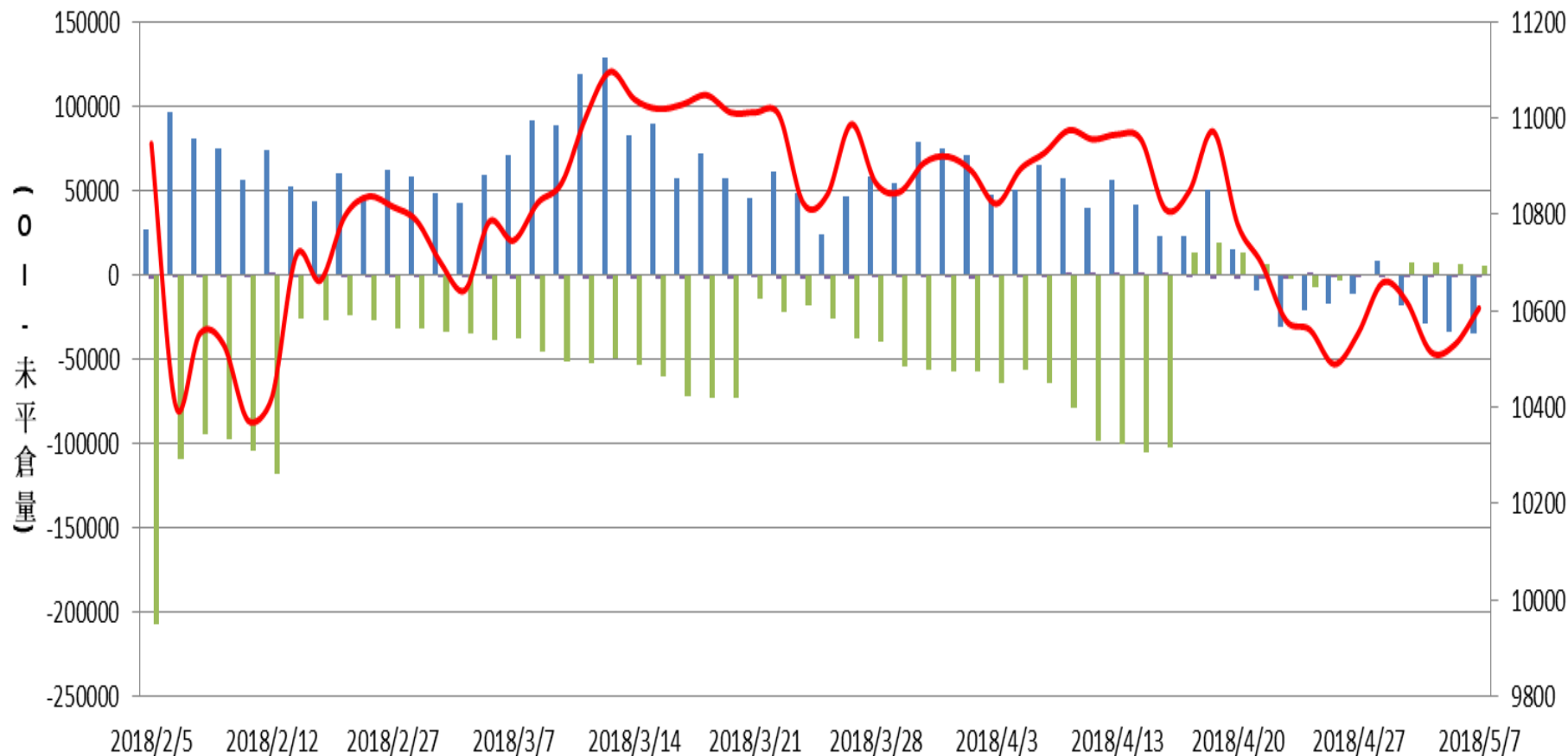


期貨自營未平倉口數



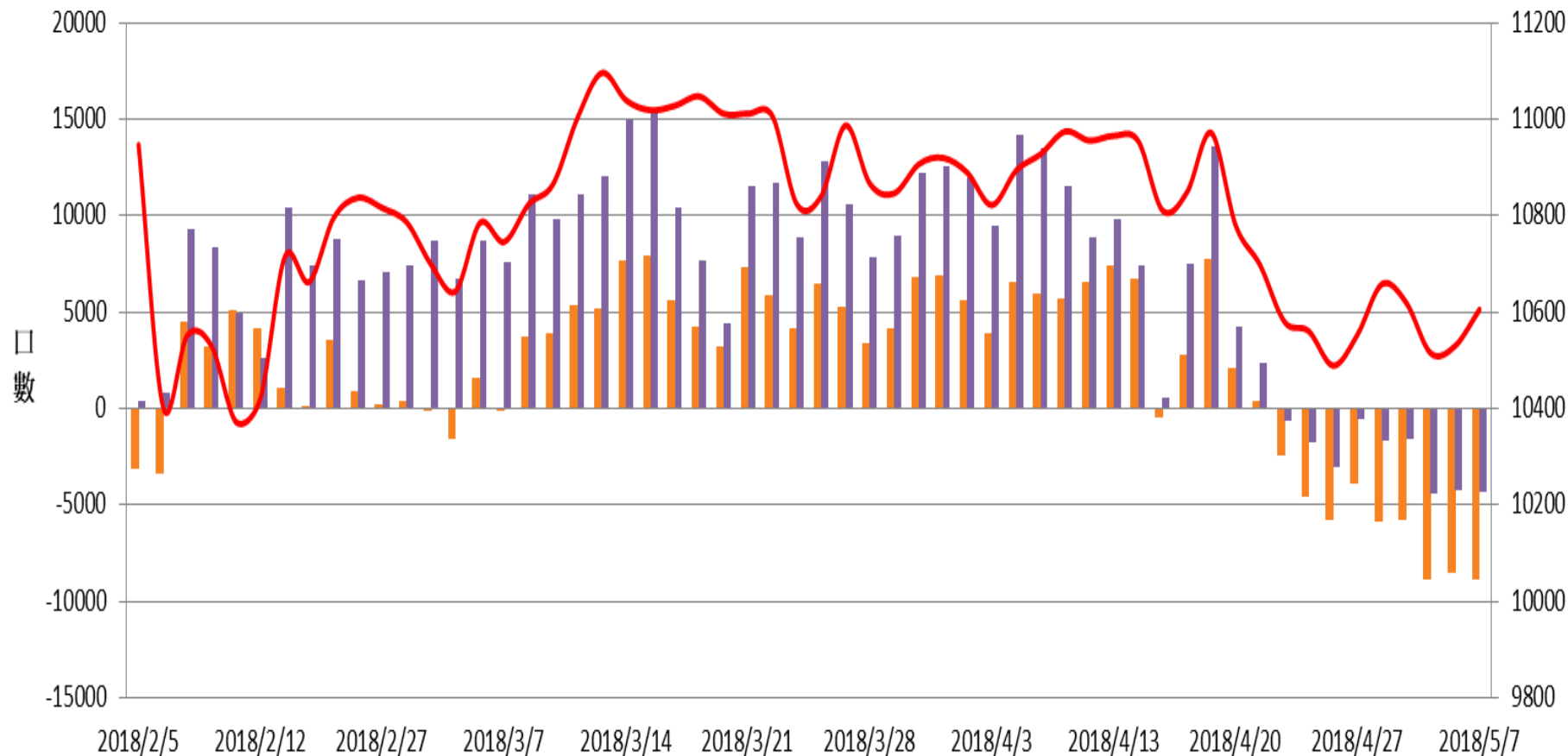
### 選擇權三大法人未平倉口數V.S 加權指數

■ 自營 ■ 投信 ■ 外資 — 加權指數



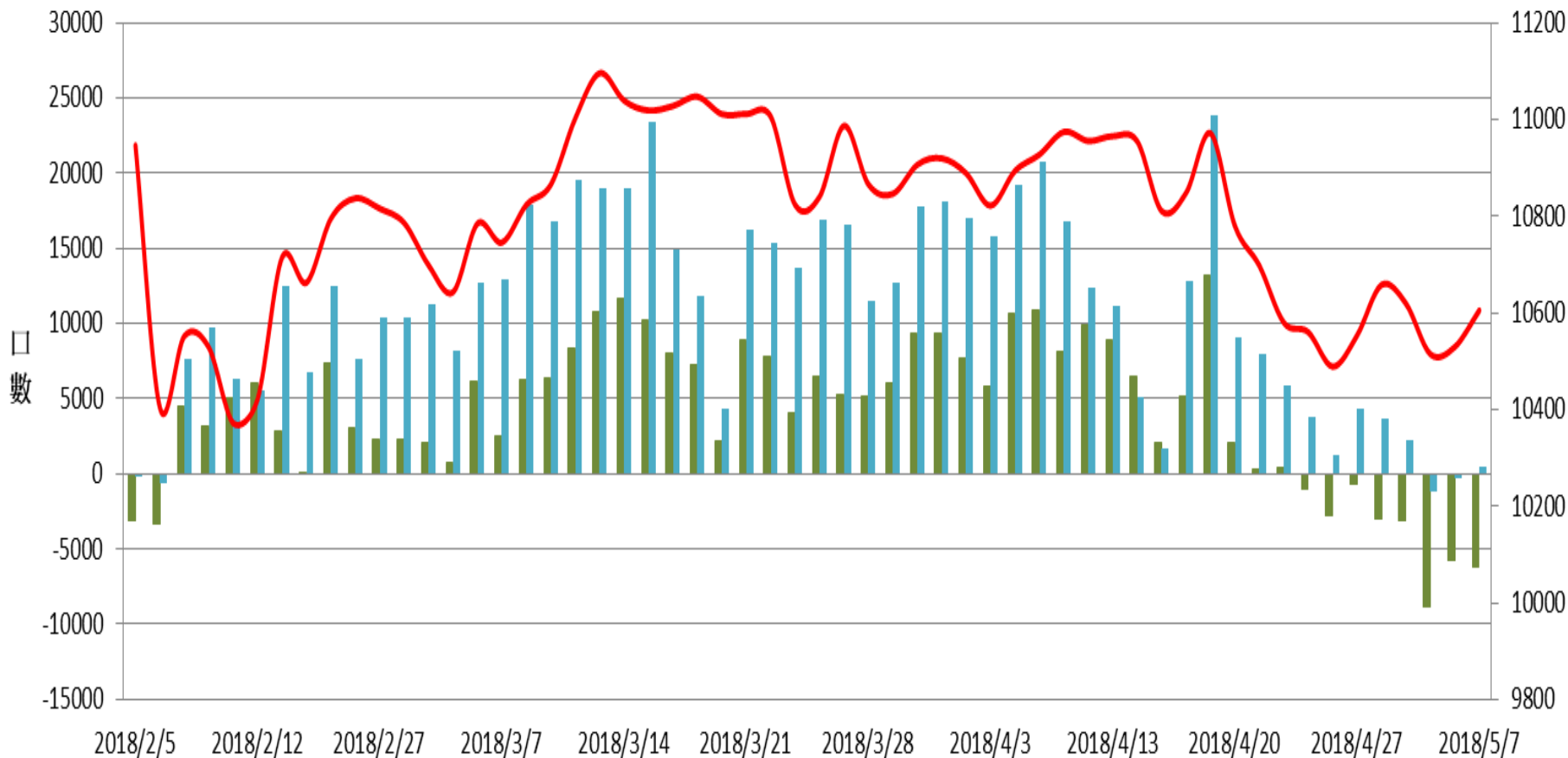
### 加權指數v.s期貨大額法人未平倉口數

前五大 前十大 加權指數



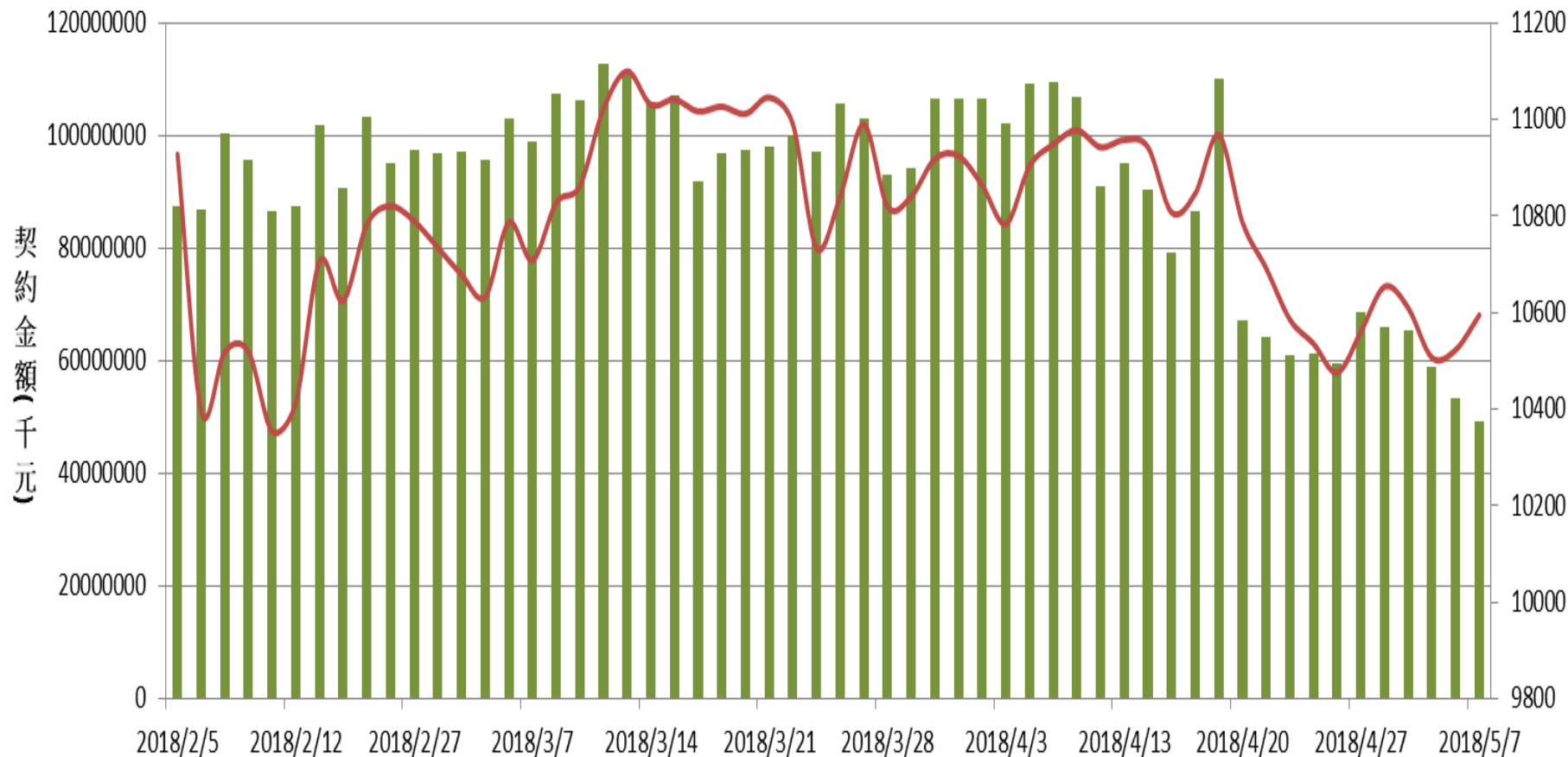
### 加權指數v.s期貨特定法人未平倉口數

■前五特 ■前十特 —加權指數

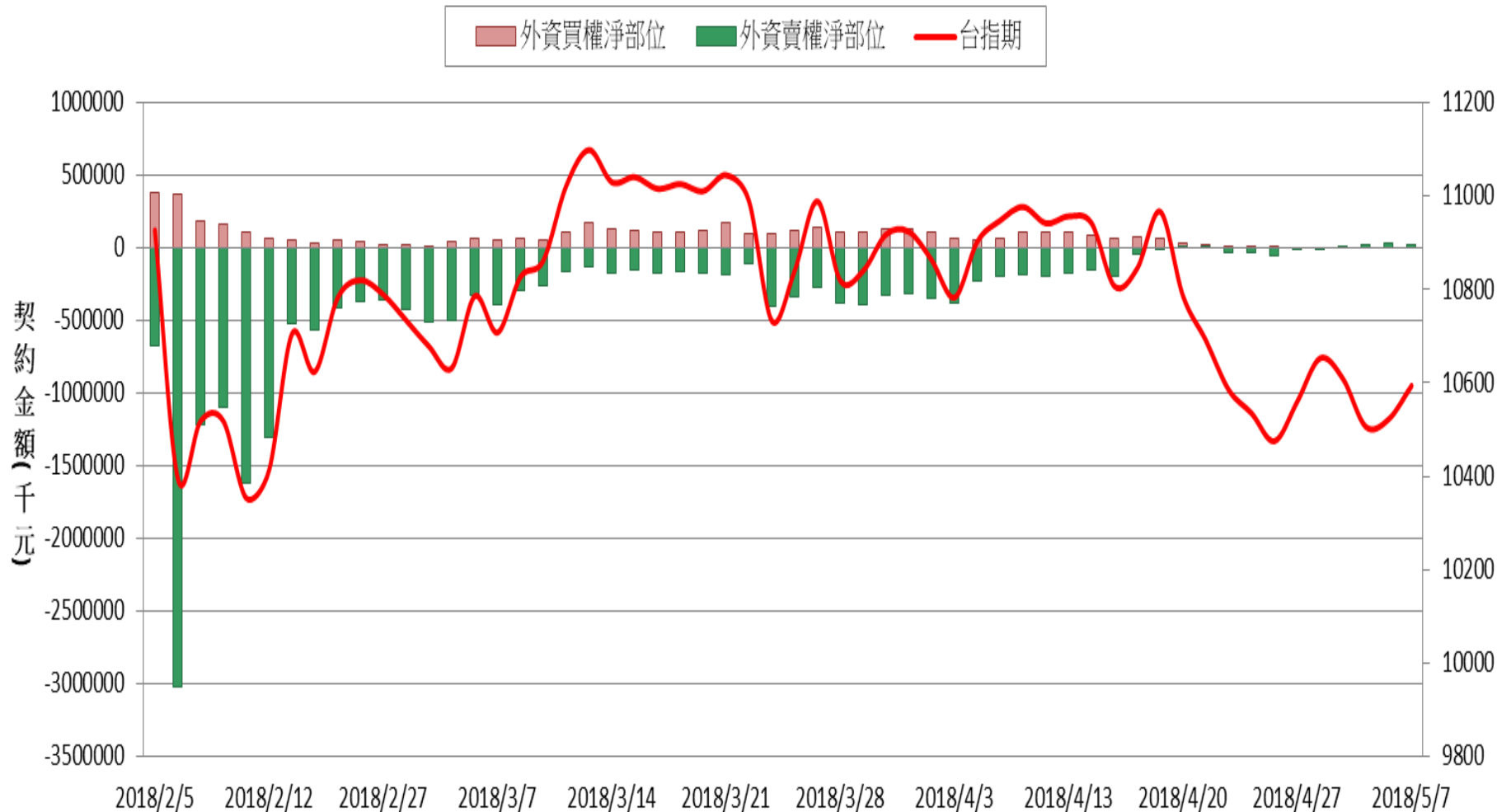


### 外資台指期與選擇權淨部位契約金額V.S台指期

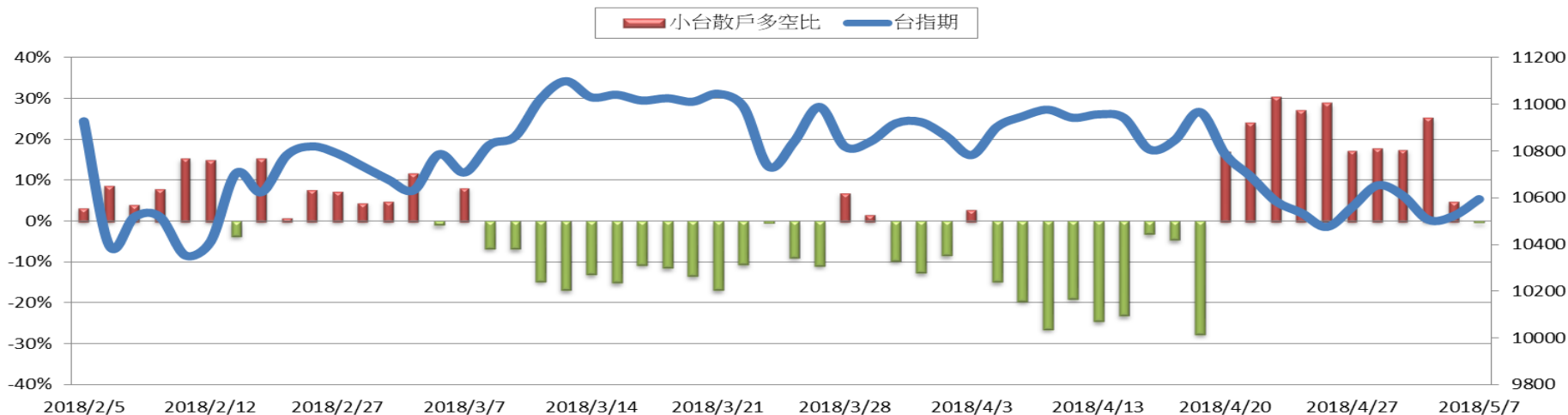
■ 外資淨部位(千元)    — 台指期



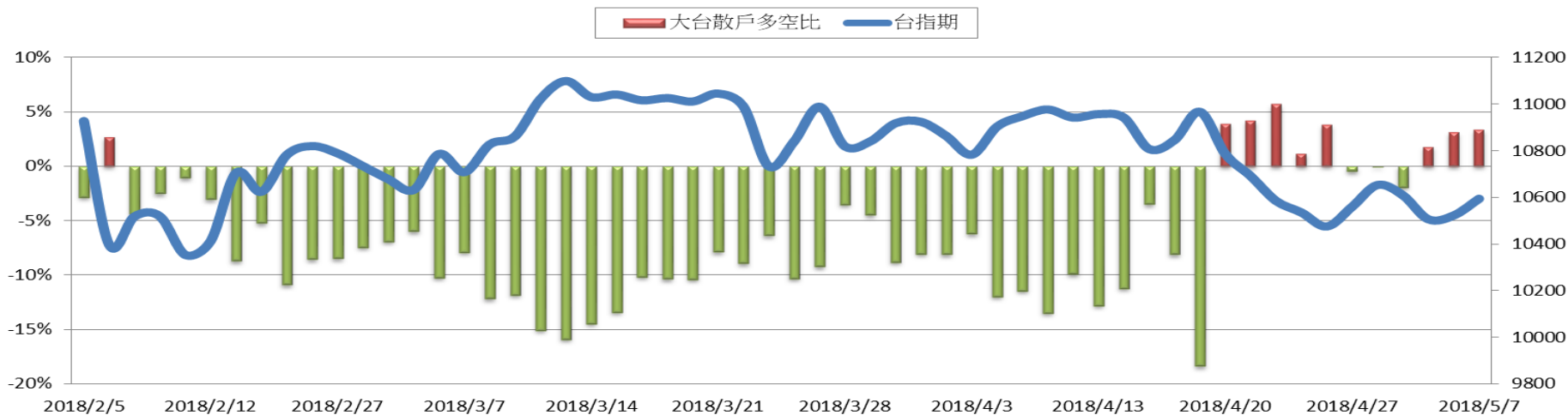
### 外資買賣權淨部位契約金額VS台指期



台指期與小台散戶多空比(%)



台指期與大台散戶多空比(%)





買			201805	賣		
Vol	OI變化	OI	履約價	OI	OI變化	Vol
0	0	17	8900	2819	(+23)	23
0	0	0	9000	6687	(+13)	47
0	0	1	9100	2883	(+7)	15
0	0	1	9200	3283	(-40)	43
0	0	22	9300	2089	(-32)	126
0	0	6	9400	3463	(-55)	355
0	0	18	9500	3500	(-102)	569
0	0	128	9600	2815	(-67)	467
0	0	103	9700	3697	(-5)	629
0	0	52	9800	9095	(-296)	1026
1	(-1)	15	9900	9314	(-612)	2391
1	(-1)	167	10000	16182	(-2719)	8355
39	(+20)	339	10100	11840	(+211)	5237
181	(-36)	372	10200	15295	(+856)	8896
661	(-27)	875	10300	21204	(+731)	11888
1747	(-442)	2752	10400	18735	(+511)	15767
7799	(-1066)	6235	10500	17153	(+1206)	18244
15948	(+943)	11669	10600	15007	(+1642)	11986
21644	(+1280)	21679	10700	8602	(-233)	5497
16447	(-374)	29188	10800	14731	(+1004)	2611
5675	(+1585)	24049	10900	3658	(-64)	322
2753	(-184)	26179	11000	1743	(-6)	225
1739	(-397)	19544	11100	898	(-2)	9
1388	(-234)	10923	11200	159	(-1)	3
580	(-131)	9717	11300	76	0	1
696	(-400)	6625	11400	120	0	0
649	(+102)	9061	11500	31	0	0
93	(-6)	5468	11600	13	0	0
9	(-99)	2505	11700	0	0	0
33	(-5)	2529	11800	8	0	0
14	(+6)	2731	11900	10	0	0
0	0	956	12000	3	0	0
4	(+4)	317	12100	0	0	0
4	(+4)	317	12200	0	0	0
4	(+4)	616	12300	1	0	0
4	(+4)	121	12400	1	0	0
0	0	343	12500	1	0	0
0	0	424	12600	7	0	0
4	0	287	12700	10	0	0
2	(+1)	696	12800	3	0	0